



Hennepin County Property Map

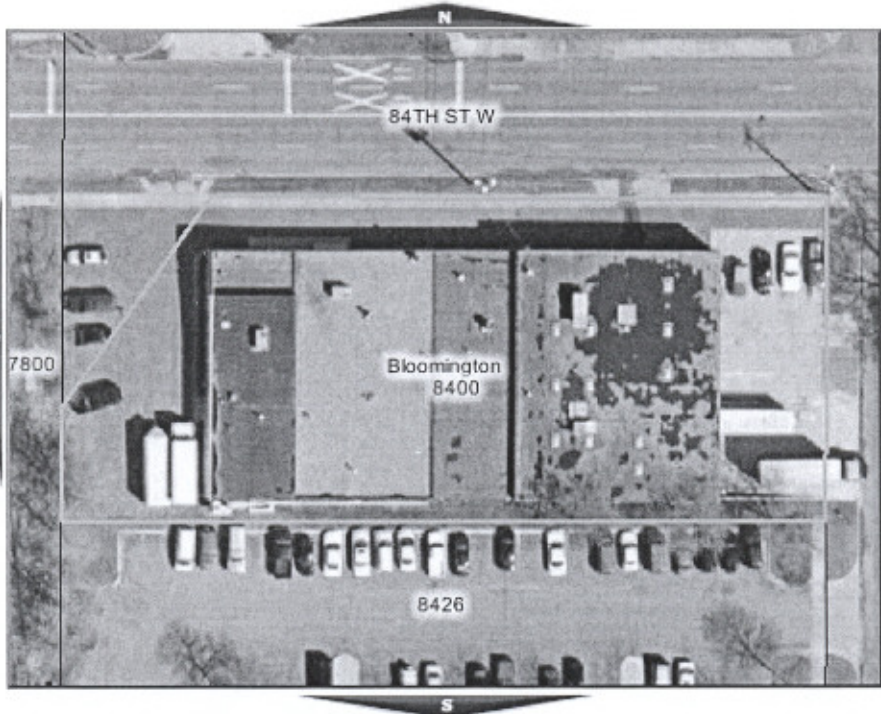
[Give us your feedback](#)
[Hennepin County Su](#)

[How to use Map](#)

-
-
-
-

Recenter on click

- Yes
- No



PROPERTY SEARCH

For quicker response information on surrounding areas, click 'Recenter on click'.

Show:

- Aerial Photos Off
- 2004* Aerials On
- City Names
- Street Names
- Address Number
- Lot Dimensions

Last update: 2/24/2006 at 3:30 PM -- READ IMPORTANT DISCLAIMER INFORMATION BELOW

[Click for detailed information on this parcel](#)

Property ID	Approximate Property Perimeter	Approximate Property Area
03-027-24-34-0050	745 ft.	29,748 sq.ft. = 0.68 acres
Property Address	Market Value	Total Tax (2006)
8400 PILLSBURY AVE S BLOOMINGTON, MN 55420	\$549,700.00	\$17,011.20

*Mpls. aerials south of Fran from 2003

Lot lines different from

The data contained on this page are derived from a compilation of records and maps and may contain discrepancies that can only be identified by a licensed land surveyor. The perimeter and area (square footage and acres) are approximates and may contain discrepancies. The purposes only. Hennepin County does not guarantee the accuracy of material herein contained and is not responsible for any material or financial derivatives.

Please report any map discrepancies to the Hennepin County Survey Division via e-mail at Surveyor.Maps@co.hennepin.mn.us. The quality of the display may be influenced by your screen size and resolution setting and is best viewed at 1024x768 or higher resolution. Please use Internet Explorer 3.02 or Netscape 2.01 or later version for proper operation.